

Pneumatic Push Toggle Clamps with Horizontal Mounting Base

SPECIFICATION

Type

- Type **SP**: Steel sheet metal body

Coding

- Coding **M**: Magnetic piston

Body

Steel

- Forged

- Chemically blackened

Sheet metal parts

Case-hardened steel C10

Zinc plated, blue passivated

Tapped connecting rod

Steel St 37

Zinc plated, blue passivated

Bearing pins (Bearing rivets)

Case-hardened

Double-action air cylinder

Max. pressure 6 bar

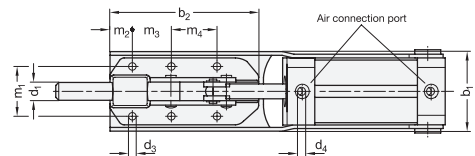
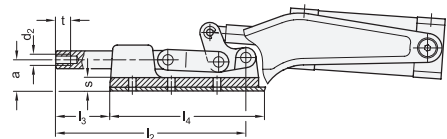
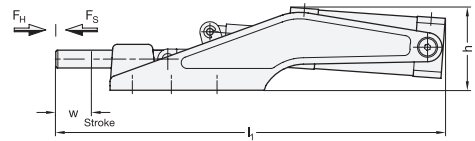


INFORMATION

The working principle of the GN 890 pneumatic toggle clamps is identical in construction and dimensions to the manual toggle clamps GN 842 (see page 1589).

To ensure an extended life of the mechanical parts as well as the air cylinders the operating pressure should not exceed 6 bar and a compressed air maintenance unit should be installed upstream. The sturdy mounting frame for the cylinder has been designed to avoid the trunions of the cylinder to protruding over the frame.

Toggle clamps GN 890 have a permanent magnet integrated into the piston. In conjunction with sensors GN 3380 (see page), it is possible to detect the end position, such as for implementing machine controls.



Operating principle



TECHNICAL INFORMATION

- General information for toggle clamps (see page 1560)

- List of pneumatic clamps (see page)

ACCESSORY

- Sensor GN 3380 (see page)

GN 890

Description	Size	FH in N	FS in N	a	b1	b2	d1	d2	d3	d4	Inside Ø connection tube	h	l1	l2	l3	l4	m1	m2	m3	m4	s ≈	t	w	⚖
GN 890-70-SP-M	70	1200	780	13.5	42	64	8.5	M 6	4.3	M 5	4	50	163	78.5	20	70	26	13	26	-	7.5	12	12	500
GN 890-360-SP-M	360	5600	1290	27.5	55	90	12	M 8	5.5	G 1/8	4	69	274	113	32	94	33.5	30	36.5	-	9.5	15	21	1400
GN 890-1100-SP-M	1100	16000	4480	28	66	133	16	M 10	8.5	G 1/4	6	85	361	171	49	138	41	15	35	41	11	18	31	2600
GN 890-2100-SP-M	2100	25000	5520	38.5	80	177	20	M 12	8.5	G 1/4	8	96.5	482	222	61.5	190	50	35	50	50	13.5	22	45	5200